



EPTS **ELECTRONIC PROTECTION TRAINING SYSTEM**

In a time of budget driven training, it has become increasingly expensive to utilise airborne jamming assets, to simulate and evaluate operational effectiveness of operators and equipment in an Electronic Warfare (EW) environment. The solution is a ground-based system that allows for threat emulation and scalable threat simulations, to assess operational readiness in an EW environment.

The EPTS offers state-of-the-art EW measures available in a small, highly mobile system giving a rapidly deployable, off-road capability.

Offering a range of jamming options against land and Naval based assets, in both the Radar and the communications bands, including deception jamming, the EPTS is a truly comprehensive jamming training aid and operational assessment tool.

INSTALLATION

Fitted to the Supacat vehicle for increased off-road capability, as well as allowing for transportation by C-17, C-130 and Chinook Heli-lift as a complete system, the EPTS is largely self-contained. Comprising Line Replaceable Units (LRUs), allowing for a mission crew of 2, the EPTS has the ability to be integrated with other mission equipment using industry

standard interfaces, offering a triangulation process for the Electronic Support Measures (ESM) system, when used in conjunction with other EPTS. This offers both a training and war role, maximising the systems use.

CAPABILITY

The EPTS is able to sustain maximum performance in all modes while maintaining jamming effectiveness against the latest ECCM radar and communications systems.

KEY BENEFITS

- Integrated communications and radar jamming
- Utilisation of the EW threat database (PALS)
- Multiple jamming signals at a time
- Configurable as an ESM threat/ DF system
- Real-time data link operation
- Off-line analysis and playback facilities
- Expandable architecture
- Pre-programmable, autonomous operation
- Highly mobile
- High reliability
- Rapid deployment/ recovery times
- Ease of use.



Assess operational readiness in an EW environment

TECHNICAL SPECIFICATIONS

Radar Frequency Range

-800 Mhz to 18 Ghz

Types of Radar Jamming

- Spot
- Barrage
- Swept
- Noise
- VGS

Comms Jamming Type

Narrow Band, spot follower

Comms Frequency Range

100 to 500 MHz

Comms Hopping Speed

>500 hops / sec

Comms Jamming modulations

FM, FSK, MSK, GMSK
Waveform selectable (16)

Comms DF Accuracy

1 ° RMS

ESM Freq Coverage

0.5 to 18 Ghz

ESM Angular Accuracy

2° RMS

ESM Antenna Coverage

Az 360°
El -10 to 30°

Altitude

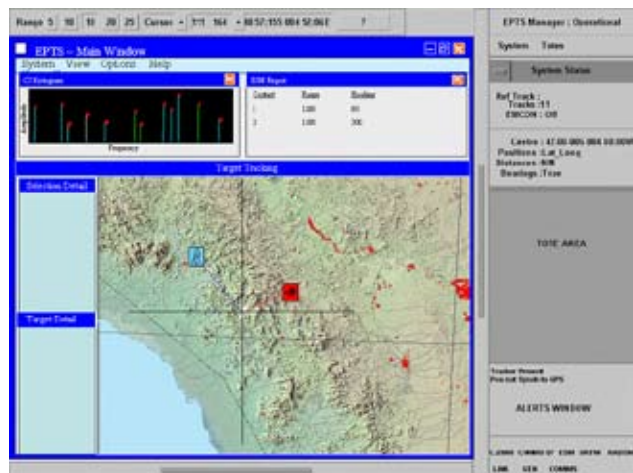
-1000 to +10,000 ft.

Ambient Temperature Operating

- 10 °C to +49 °C

Availability

> 95%



System interface



Comms jammer



For more information please email sales.marketing@selexgalileo.com

SELEX Galileo Ltd, A Finmeccanica Company

Christopher Martin Road, Basildon, Essex, SS14 3EL United Kingdom, Tel: +44 (0) 1268 522822, Fax: +44 (0) 1268 883140

This publication is issued to provide outline information only and is supplied without liability for errors or omissions. No part of it may be reproduced or used unless authorized in writing.

We reserve the right to modify or revise all or part of this document without notice.

2010 © Copyright SELEX Galileo Ltd

www.selexgalileo.com

SELEXGALILEO\UK\Dsh-88\011001\mjg